

INSIDE / OUTSIDE

# OFFICE DESIGN II

**ARTPOWER**

INSIDE/OUTSIDE  
OFFICE DESIGN II

Copyright © Artpower International Publishing Co., Ltd

**ARTPOWER™**

Designer: Allen Hong  
Chief Editor: Cindy Lee

Address: 21/F, Skyline Commercial Center, 71-77  
Wing Lok Street, Sheung Wan, Hong Kong

Tel: 852 3184 0676  
Fax: 852 3543 2396  
URL: [www.artpower.com.cn](http://www.artpower.com.cn)  
E-mail: [artpower@artpower.com.cn](mailto:artpower@artpower.com.cn)

ISBN

No part of this publication may be reproduced or utilised in any form by any means, electronic or mechanical, including photocopying, recording or by any information storage and retrieval system, without prior written permission of the publisher.

All images in this book have been reproduced with the knowledge and prior consent of the designers and the clients concerned, and every effort has been made to ensure that credits accurately comply with information applied. No responsibility is accepted by producer, publisher or printer for any infringement of copyright or otherwise arising from the contents of this publication.

Printed in China

INSIDE / OUTSIDE

# OFFICE DESIGN II

## CONTENTS

ACBC Office	010	Larchmont Office	182
Teapa Office Building	018	American Society of ematology	188
Montes Urales Office Building	020	Registrar Recorder's Office	192
GOR Building	024	INSURANCE COMPANY	200
PRADO SUR OFFICE BUILDING	026	Advice House	204
GTE Office BUILDING	028	Weena Office	214
Rijkswaterstaat	030	MEINL BANK	222
3M Headquarters	036	Office Storey Mühlheim	226
GT Tower East	044	Skype head office – Stockholm	236
L'Origami	052	Liquidnet	244
Yardmasters Building	058	Forward Media Group Office	252
Enea Headquarters	062	Yandex Saint Petersburg office	262
TransPort	068	2GIS Office	266
Team-Architrend Office	074	'Yandex' internet company office in Yekaterinburg	278
Chevron Headquarters	080	Federal Drug Administration, Center for Drug Evaluation Research	286
Legal Office	086	Science Center for Medical Technology	292
LBI	092	RTKL DC Office	304
Sipos Aktarik	100	Astrazeneca Office	310
New Head Office for the FMT Group	104	Media Academy	316
New Headquarter Of Solon Se	112	Office MBO Raad	318
Office Building And Logistics Center	120	Office Besturenraad / BKO	324
PJCC	136	Netherlands Broadcasting Music Centre	334
New construction of a research and development building	144	National Broadcasting Channel	338
Silverspur Office Building	148	Prodigy Msn Corporate Office	342
Azure	152	Monex Office	348
Ios Offices R115	156	Industrial Association	352
Studio Ippolito Fleitz Group	160	Guangzhou ONLEAD Furniture Co. Ltd, Shanghai Branch	364
Modification of a Development Office in Mühlheim	172	Luminare	372
Deloitte Newcastle	176	Office Omroep Brabant	382
		Contributors	385



INSIDE

OUTSIDE

## Mario cucinella architects



We design and construct Architectural and Industrial Design projects that, through research, the use of innovative technologies, and professional skill, embody an ideal of architectural quality integrating environmental sustainability, ethics and a positive social impact.

MCA, Mario Cucinella Architects, founded in 1992 in Paris and in Bologna in 1999, is a company with a solid experience at the forefront of contemporary design and research. Mario Cucinella, lead an international team of architects, engineers and designers.

MCA has an integrated approach to design work based on close collaboration with multi-disciplinary consultants to create an innovative and appropriate design response for every project and clients requirements. MCA develops projects at different scales, from building design to product design, from environmental and technological research to large-scale urban projects.

Sustainable building design and the rational use of energy is one of the central concerns in MCA's work and research. The environmental quality of designs is analysed and developed using specialized software and model testing in order to produce buildings of architectural quality with state of the art energy performance.

## Sergey Makhno



Sergey Makhno - is an artist, architect, designer, workshop project manager. Graduated from Kiev National University of Building and Architecture as well as from Academic School of Design (Moscow). His career as a designer is not an ordinary one. In his early childhood Sergey showed interest to design work, however, he started his career as

a trainer of KioKushinkay karate and grew to professional writer and designer of Author's furniture. In 1999 he founded "Makhno workshop". Sergey believes that his imaginative vision is combination of contradictory backgrounds and creation of artistic mixes from seemingly incompatible things. He prefers rather not to have a rest but pay a visit to world design exhibitions and exposure into antique shops. May come up with an invention and devise not only well-forgotten old things but also new ones never thought of before. Apart from interiors, he designs original furniture, produces pictures, collages, collects antique suitcases, eau-fortes, towels, radiophonographs, scissors.

## Rios Clementi Hale Studios



Rios Clementi Hale Studios, established in 1985, has developed an international reputation for its collaborative and multi-disciplinary approach, establishing an award-winning tradition across an unprecedented range of design disciplines. Acknowledging the firm's varied body of work, the American Institute of Architects California Council

gave Rios Clementi Hale Studios its 2007 Firm Award, the organization's highest honor. For its varied landscape work—from civic parks to private gardens—the firm was named a finalist in the 2009 National Design Awards. The architecture, landscape architecture, planning, urban, interior, exhibit, graphic, and product designers at Rios Clementi Hale Studios create buildings, places, and products that are thoughtful, effective, and beautiful.

## Architrend Architecture



Architrend Architecture is an architecture firm that approaches design as an interdisciplinary venture where minimum form takes maximum effect. The entire project is considered starting from client's needs as well as site and environment exploration through all design process.

from initial concept to construction phase, to design and build high quality and value added architecture, built as figured it out in the design process. Starting from 1989 the two partners Gaetano Manganello and Carmelo Tumino design and build public buildings, resorts and single family houses with a contemporary minimalist and direct approach.

To house their new office Manganello and Tumino had designed themselves a building for their headquarter in an area of urban sprawl on the outskirts of Ragusa in the south eastern portion of Sicily, where they live and work. Completed in 2008 the two storey building houses also retail activities (ground floor) and offices of a building contractor (in a portion of first floor) for an integrated design approach with high quality engineering consultants. Along with being published in major national and international media such as Casabella, Electa, Interni, Edilizia e Territorio, A10, Archdaily, Architrend Architecture has received many prestigious design awards including the 2009 "G.B. Vaccarini Quadranti di Architettura" award and the 2010 "Ance Catania" award. They have lectured and exhibited at many universities as well as at several national and international design conferences.

## SPACE



Not long ago we opened SPACE with the intention of working with corporations which think that space makes a difference. Our passion has always been design and architecture. We structure a new way of seeing architecture and we develop methodologies inline with this vision.

With an interest in being the best if not the biggest, we surround ourselves with an interdisciplinary team of highly talented professionals. We take into account the importance of research and technology and we include both in our method of thinking and working, always seeking SUSTAINABLE solutions which not only RESPECT the environment but which help to improve our surroundings.

We are convinced that ideas move quicker when you think of people-technology-space at the same time. In this way we begin to put intelligent people with intelligent technologies into intelligent spaces. We have created various lines of business, CORPORATE ARCHITECTURE both interior and exterior, COMMERCIAL ARCHITECTURE, points of sale, shopping malls and RESIDENTIAL ARCHITECTURE, among others.

## COEN! design agency



Coen van Ham (1971) is a Dutch conceptual designer, architectural designer and source of creative inspiration. He studied at the renowned Design Academy in Eindhoven.

COEN! is one of the leading agencies in the Netherlands on account of its innovative concepts, stunning designs and inspiring workshops. His style is colourful, graphic, sober and communicating.

Coen and his team shape and guard over identity. Designs for your works of art, corporate identity, product and interior are all based in a powerful and unique concept. Designs by Coen van Ham have been included in several design and art collections. His work was shown in a diverse range of exhibitions worldwide. Coen's work has been featured in numerous magazines and books.

## Brinkworth



Brinkworth was formed in 1991 by founder and company director Adam Brinkworth. The company is run by three directors: Adam Brinkworth, Kevin Brennan and David Hurren - and five Associate Directors: Simon Ash, Karen Byford, Howard Smith, Pamela Flanagan and Murray Aitken. Although based in a single London office, the company has active projects all around the world.

Brinkworth is a design-led company working in architecture, interior design and furniture design as well as creative brand strategy and graphics. Projects are predominantly in the areas of retail, workplace design, exhibitions, leisure and residential houses, but it is in retail - and particularly fashion retail - that Brinkworth have made their reputation. Brinkworth's most long-term retail client is fashion retailer Karen Millen, for whom Brinkworth have completed stores all over the world, designing every element from the bespoke merchandising units to all the architecture and interior design.

The company also work on exhibition projects, most recently the company designed portable structures for Converse to be installed at music festivals. Brinkworth have design high-end residential schemes, such as a house for shoe designer Patrick Cox, an apartment for stylist William Baker and a town house for the artist Dinos Chapman and more recently converted a 800 square meter concrete water reservoir into a weekend retreat for the artist and his family.

## PS Arkitektur



PS Arkitektur works with a wide range of projects - urban planning, houses, office interiors and branding. PS have a proactive approach in which they draw inspiration from our time and try to be at the forefront with new solutions and materials. Their vision is to create contemporary

architecture that is sustainable. Using the experience PS have built since its start in 1995, they give the client the best aesthetic, technical and economic solutions. PS highlights the conditions, visualizes the invisible and suggests changes. Architecture and interior design is a competitive tool that communicates with the outside world and creates physical and social value. In collaboration with the client PS define goals and requirements so that the architecture becomes an extension of the client's identity and vision. A well-implemented project is prerequisite for a successful end result. The strength of PS Architecture is that they take a coordinated accountability throughout the entire process, from concept sketches to the final result, where they combine their experience and knowledge with other actors' skills.

## Modostudio-cibinel laurenti martocchia associated architects



modostudio | cibinel laurenti martocchia architetti associati, located in Rome, is a multidisciplinary practice of architecture, urban planning and industrial design. Profiting from the diversified skills of the founding partners and the continual collaboration

with experts from various fields, Modostudio combines architectural theory, research, innovation and experimentation with high technical knowledge and professionalism.

Established at the end of 2006 by three principal architects, Fabio Cibinel, Roberto Laurenti, and Giorgio Martocchia, after many years of collaborating with internationally acclaimed architects like Massimiliano Fuksas, Piero Sartogo, Erik Van Egeraat and Kas Oosterhuis, modostudio in a short time was awarded and shortlisted in many international architectural competitions.

## Minina Tatyana



She has graduated from Novosibirsk Architecture Academy, and started her work as a graphic designer gradually moving to interior design.

In 2006 she has moved to Moscow, where she's studied in British Higher School of Art and Design majoring in

product design. It helped her easily create furniture for her interiors, work with different materials and find a new way to projection.

All her work is centered around client. She just tries to create an ideal space for client's lifestyle: finding individual lay-out, style and materials, color spectrum that is comfortable for people who will be living there. That's why all her works are different - they are created for such different people. She guesses, that a good designer has the ability to work in different styles, and goes a long way to develop his own unique manner.

She really values every possibility to participate in different projects and contests, which allow her to work out of the box and show her talent. She thinks she's a pretty young designer and she tries to break all the stereotypes and clichés, she learns on works of such gurus as Karm Rashid, Zara Khadii, Marcell Vanders. Being open to everything new she can work at the same time on villas' design on Bali and Georgian restaurant in the Moscow.

## C. F. Møller Architects



C. F. Møller Architects is one of Scandinavia's oldest and largest architectural practices. Our work involves a wide range of expertise that covers programme analysis, town planning, master planning, all architectural services including landscape architecture, as well as the development and design

of building components.

Simplicity, clarity and unpretentiousness, the ideals that have guided our work since the practice was established in 1924, are continually re-interpreted to suit individual projects, always site-specific and based on international trends and regional characteristics.

Over the years, we have won a large number of national and international competitions and awards. Our work has been exhibited locally as well as internationally at places like RIBA in London, the Venice Biennale, the Danish Architecture Centre and the Danish Cultural Institute in Beijing.

## Shenzhen Shangchen Design Co.Ltd



Pan Jun, graduated from the Department of Fine Arts of Ningxia University in 1993, specialises in architecture, redesign, and office, hotel and villa design. From 1994 to 1997, he worked as a designer in Shenzhen Yuanjun Enterprise Strategy Company, from 1997 to 2005, he was the design director of Shenzhen Panjun Enterprise Strategy Company,

since 2005 to now, he has been the design director of Shenzhen Shangchen Design Company.

Pan Jun has won numerous design awards, including: Excellence Award on Retail Store Display and Office Space, from Third China (Shenzhen) International Interior Design Cultural Festival in 2007, the "Excellent Interior 'Designer' honor in both 2007 and 2009, and a series of awards from China (Shenzhen) International Innovative Design Expo and the Octopus International Professional Interior Design Competition in 2008.

# Team-Architrend Office

Location/ Ragusa, Italy Area/ 5,000m<sup>2</sup> Photography/ Umberto Agnello [Architrend Architecture](#)



Made of reinforced concrete and covered in glass, this building a strong character tends to get minimal, with the least formal means, the ultimate functional outcome.

The project is located in an area of urban sprawl on the outskirts of Ragusa. The building has a large frame on the first floor, concrete-face view of 50 cm height, placed flush with the external shock defines the volume of the first floor, creating a gap with the glass facades of the ground floor. Wide overhangs to protect the entire perimeter of the building's windows from the sun, the curtain walls are made of aluminum frames with thermal and solar control double glazing with argon gas, along with a system of exterior blinds in aluminum slats, electrically

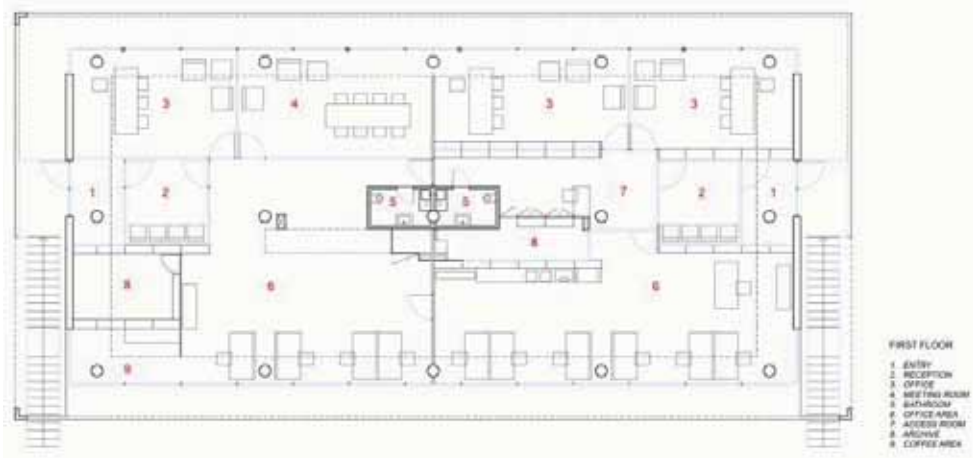
adjustable, maximizing the contribution of solar radiation. A system made up of photovoltaic panels, installed in an open area of the lot, by the power of 50KW, fully complies with the building's energy requirements.

All system components are managed by the building of a Vantage home automation system that acts on the sensors for the lights inside and outside, on the opening or closing the curtains to adjust the intensity of daylight and the alarm system.

The water of rainfall collected from roofs is collected in a special reserve and reused for irrigation of green.









# Rijkswaterstaat

Architectenbureau Paul de Ruiter

Location/ Middelburg, The Netherlands  
Client/ Dutch government, Department of Water  
Management and Transport  
Area/ 11,835m<sup>2</sup>  
Photography/ Rob't Hart and Pieter Kers



In 2000, a European selection process led to the appointment of Architectenbureau Paul de Ruiter as architect for the new regional office in Zeeland of Rijkswaterstaat (RWS, the Dutch Directorate-General of Public Works and Water Management). The assignment was clear: to design a functional, transparent, accessible, environmentally responsible and flexible building that fits in with the urban development plan for the city of Middelburg, at a reasonable price.

The building of Rijkswaterstaat is an office building, but it also houses a crisis center, state archives and an 100% guaranteed computer center which, in case of an emergency, can direct all the sluice gates of the province of Zeeland, including the Delta works. During the project the wishes of the client, urban planners and end users were kept constantly in mind, and this led to the construction of a modern building that satisfies the specified conditions.

The design of the RWS office building fulfills an important communicative role, both internally and externally. To give the office an image in keeping with a public services building, it is

transparent, so that you can literally see the personnel working, holding meetings and eating lunch from the outside. Communication is also stimulated among the workforce in the building itself. Glass partitions between corridors and offices together with flexible workstations provide many opportunities for contact, and wide, recessed corridors with sitting areas, coffee corners, meeting spots and other areas for discussion make it easy to exchange ideas.

The office contains active concrete to keep the building cool in the summer and warm in the winter. This makes it possible to create a constant and comfortable working climate and to achieve an energy saving of 40% to 50% over traditional cooling and heating methods.

# 3M Headquarters

Location/ Pogliano, Milan, Italy  
Client/ Prelios  
Area/ 11,300m<sup>2</sup>  
Photography/ Daniele Domenicali

Mario Cucinella Architects



# TransPort

Location/ Amsterdam Schiphol Airport  
Client/ Schiphol Real Estate and users Martinair and transavia.com  
Area/ 12,400m<sup>2</sup>  
Photography/ Pieter Kers

Architectenbureau Paul de Ruiter



Schiphol Real Estate is working on a master plan for the redevelopment of the Schiphol-Oost business park into Schiphol Aerospace Exchange. Paul de Ruiter Architects was commissioned to design a new head office for transavia.com and Martinair, TransPort, in one corner of the industrial estate. The turn-key of TransPort took place on Monday 15 March 2010 – exactly one year after the start of building. A unique accomplishment in the world of construction.

Two crucial elements of the design are an optimum communicative appearance and the interaction of the building with its environs. TransPort is the first office building in the Netherlands to satisfy the sustainability requirements of BREEAM-NL. Furthermore, the building has been developed to comply with the most stringent requirements in the area of sustainable construction, as formulated by the internationally renowned LEED Platinum certification authority (<http://www.usgbc.org>).

